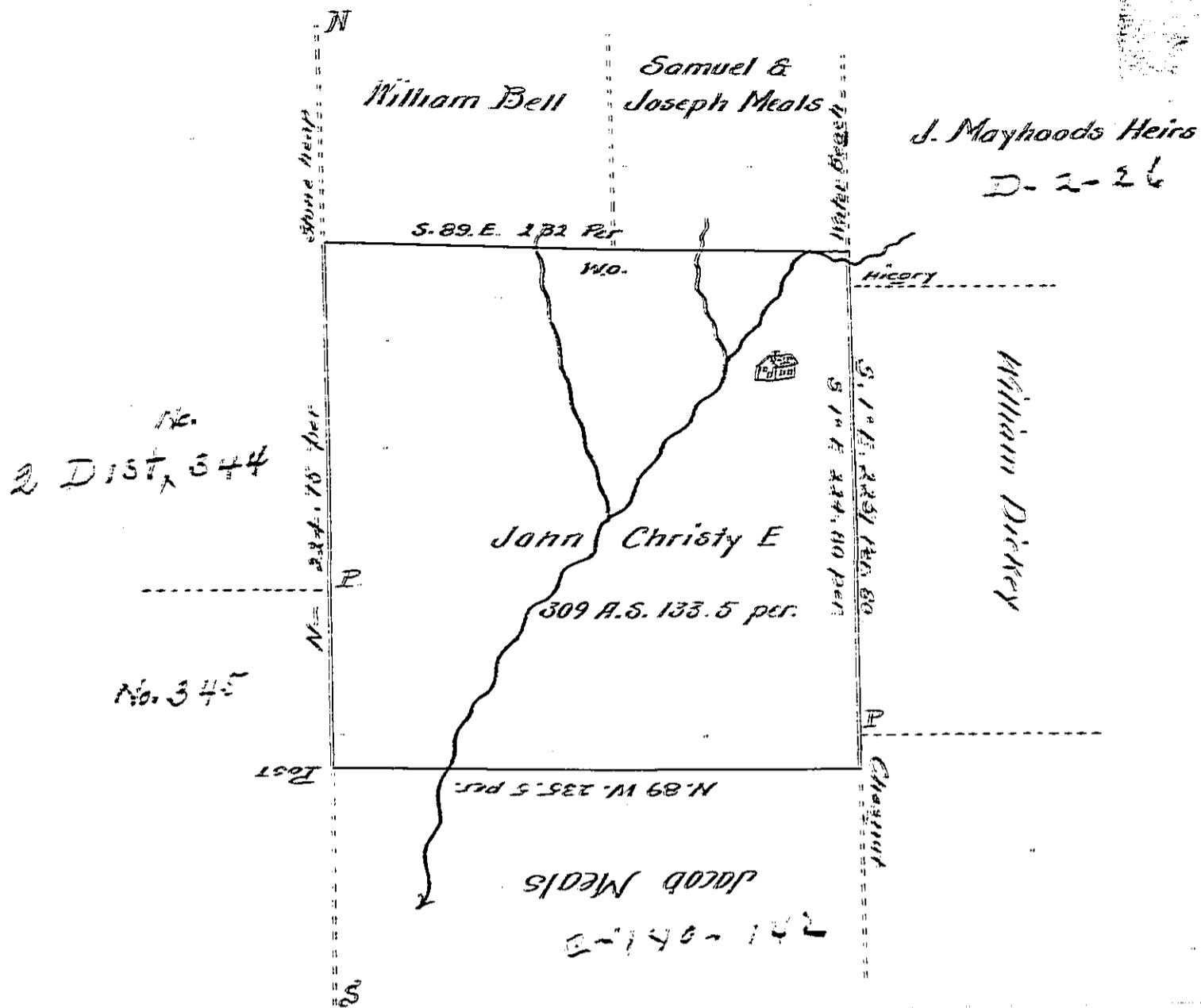


C-22-156



This is a draft of a tract of Land situated in Parker Township Butler County on the waters of the south branch of Slippery rock Creek, bounded as is represented by the figure containing 309 A. S. 133.5 pr. & the usual allowance for Rods &c. being a tract of land in the struck Donation district No 2 Settled by Jno Christy E

Surveyed for the said Jno Christy 18th of Nov. 1836

James Dunlap Sub
 Ps. for T. H. Lyon
 John Taylor Esq. S.G.

IN TESTIMONY that the above is a copy of the original remaining on file in the Department of Internal Affairs of Pennsylvania, made conformably to an Act of Assembly approved the 16th day of February, 1833, I have hereunto set my Hand and caused the Seal of said Department to be affixed at Harrisburg, this twenty-second day of April 1907

Anna B. [Signature]
 Secretary of Internal Affairs.